

UNITE NETWORKING AND SECURITY FOR A WORLD THAT NEVER STOPS

STOP CYBERATTACKS EARLIER WITH INFOBLOX DNS DETECTION AND RESPONSE

Security Snapshot: Infoblox Addresses a Critical Security Gap in Microsoft DNS

90% of cyberattacks exploit the DNS layer - Only 42% protect it

The data reveals the vulnerability organizations are facing, but the question remains: How do we safeguard and stop threats at this critical DNS level to reduce security alerts, ease the burden on downstream defenses and save major time and resources? By adding Infoblox® BloxOne® Threat Defense to your Microsoft DNS Server environment.

Our DNS-based detection and response expertise blocks threats early on, reducing the need for time-consuming security tasks. Plus, BloxOne Threat Defense customers experience a typical ROI of 243%, with a 47% drop in network downtime* – a win for your company's security and bottom line.



FIVE REASONS WHY

Welcoming BloxOne Threat Defense into your Microsoft DNS Server environment offers:

- 1. Hidden Threat Detection:** AI/ML technology detects hidden DNS threats others miss.
- 2. End-to-End Security:** Centralized control for all environments, including remote workers and locations.
- 3. Instant Security:** Configuring Microsoft DNS with BloxOne Threat Defense instantly and easily secures your network. (see Figure 1)
- 4. Real-Time Threat Intelligence:** BloxOne Threat Defense provides continuous updates and adapts to emerging threats.
- 5. Enhanced Network Performance:** BloxOne Threat Defense integration improves network economy and efficiency.

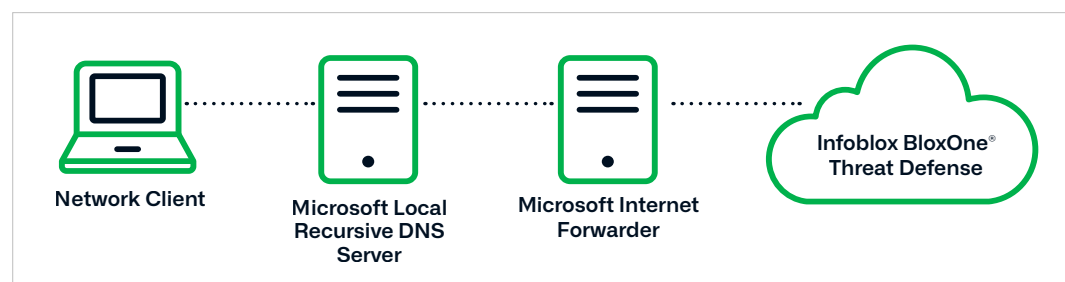


Figure 1: Connect the Microsoft DNS Server to BloxOne Threat Defense in just a few steps:

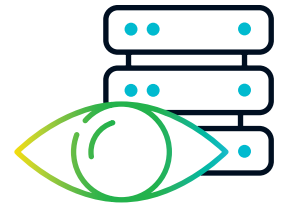
*Source: "[The Total Economic Impact of Infoblox BloxOne Threat Defense](#)"- Forrester Consulting, February 2021

Keep Pace: Face Challenges & Change with Infoblox Core Network Services and Security

Why Transitioning to Infoblox DDI Can Elevate Networks

Many IT organizations aim to cut costs using “free” Microsoft DNS Server features for DNS, DHCP, and IPAM (IP Address Management), known as DDI — but these “free” core network services often lack scalability, security features, and may even raise total ownership costs. This can lead to downtime, service disruptions, financial losses, brand damage, or ransomware risks.

The addition of Infoblox DDI extends the value of the Microsoft infrastructure via a highly available and scalable solution that seamlessly integrates network services to maximize reliability, security, and automation. Remember, in the world of technology, a small upfront investment into a robust infrastructure solution can save you money in the long run.



FIVE BIG BENEFITS

Migrating from Microsoft DNS Server to Infoblox DDI to manage DNS, DHCP, and IPAM can offer:

1. Streamlined DNS, DHCP, and IPAM management, reducing manual effort and errors.
2. Seamless integration with Microsoft Active Directory, enhancing workflow.
3. Complete visibility across all sites, devices, and environments.
4. Simplified network architecture for fast, disruption-free deployment and management.
5. Automated provisioning and change management, with integrated reporting for resource and cost savings.

UNITE NETWORKING AND SECURITY FOR UNMATCHED PERFORMANCE AND PROTECTION

Pairing Infoblox DDI with Infoblox BloxOne Threat Defense gives organizations a powerful tool to modernize their network while also boosting security and efficiency. This combination provides the performance and protection your business needs to excel. Bring the benefits to your world by uniting Infoblox DDI and BloxOne Threat Defense and discover:



Early Attack Prevention:

Block threats proactively and reduce response time by over 60%, enhancing attack detection and containment speed



Effortless Device

Identification: Quickly identify affected devices, including non-standard endpoints, without the need for additional agents



Streamlined Automation:

Seamlessly share Infoblox DDI data across various security tools for faster, automated responses to detected events